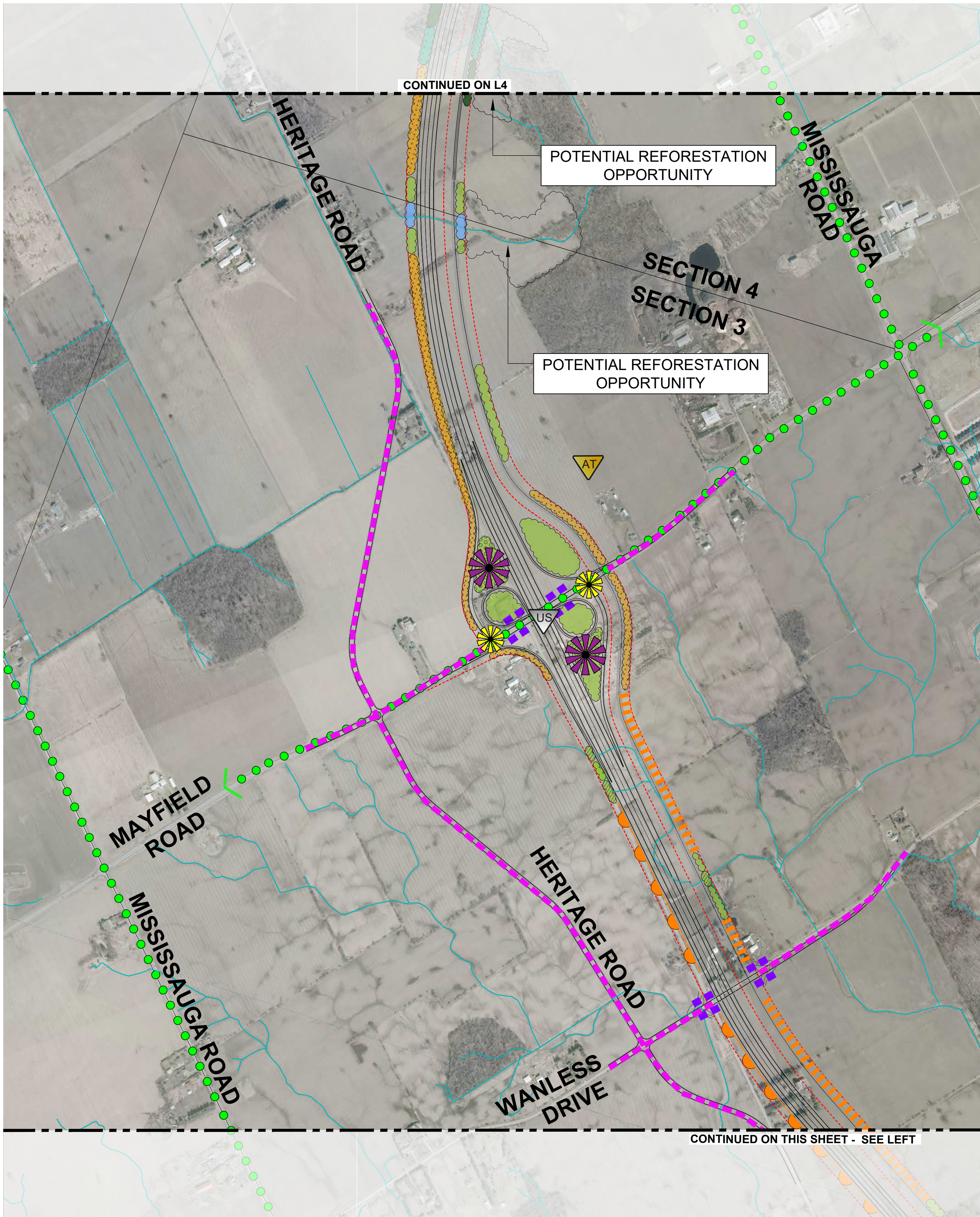
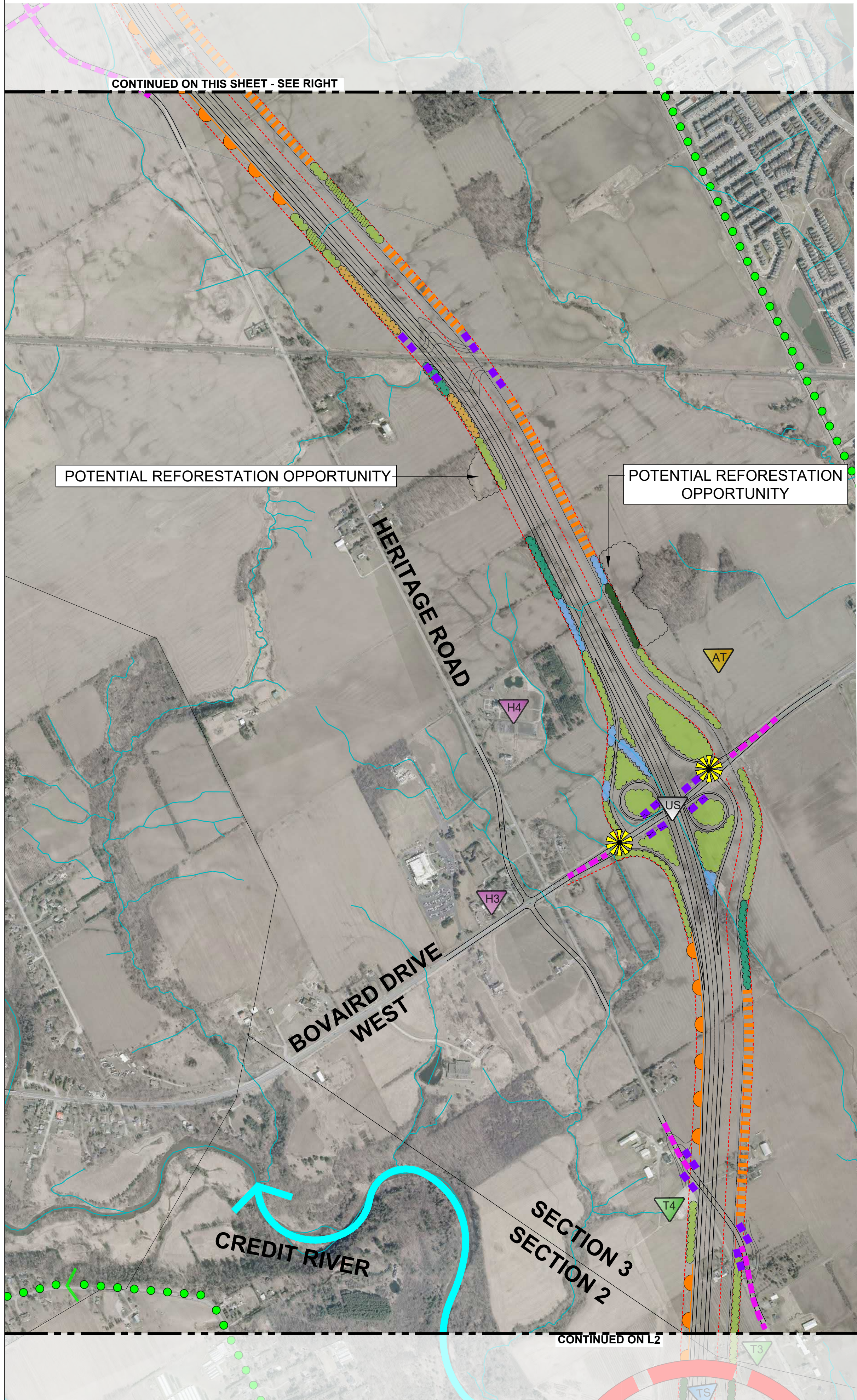
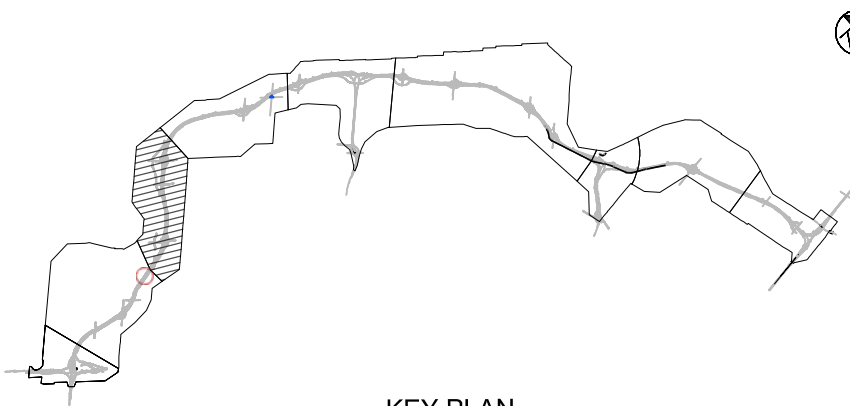


DRAWING: L:\LEGACY\CAKON\17001\DATA\PROJECTS\60347240-GTA WEST\900-CAD_GIS\910-CAD\20-SHEETS\60347240-STRAW MODEL.DWG
LAYOUT TAB: L3
DRAWN BY:
REVISED BY:
LAST SAVED: 05/25/2021 12:11:59 PM



Local Tourism		Local Heritage	
Site Description		Site Description	
T3	Carl Laidlaw Orchards	H3	Assembly Hall of Jehovah's Witnesses
T4	Apple Factory Farm Market	H4	St. Elias The Prophet Ukrainian Catholic Church



- LEGEND:
- PRELIMINARY HIGHWAY AND TRANSIT CORRIDOR RIGHT-OF-WAY (ALIGNMENT TO BE CONFIRMED)
 - ENHANCED LANDSCAPE PLANTING
 - ENHANCED LANDSCAPE PLANTING - LOW GROW
 - ENHANCED LANDSCAPE PLANTING - DRAINAGE CHANNEL
 - REFORESTATION PLANTING
 - RURAL BUFFER PLANTING
 - WETLAND PLANTING
 - RIPARIAN PLANTING
 - STORMWATER MANAGEMENT LANDSCAPE PLANTING
 - VALLEY RESTORATION / NODE OF INTEREST
 - REGIONAL GATEWAY
 - COMMUNITY GATEWAY
 - GRADING REQUIRED
 - WINDSCREEN
 - WILDLIFE CROSSING
 - DENSE VISUAL VEGETATION SCREEN
 - BANK STABILIZATION
 - PROPOSED MUNICIPAL ROAD REALIGNMENT
 - PROPOSED MUNICIPAL TRAIL
 - EXISTING MUNICIPAL TRAIL
 - UNDER STRUCTURE TREATMENTS (VISIBLE DRIVING UNDER BRIDGE)
 - TOP OF STRUCTURE TREATMENTS (VISIBLE DRIVING OVER BRIDGE)
 - ANTICIPATED TRANSIT STATION ARCHITECTURAL TREATMENT *TRANSIT STATION LOCATIONS TO BE CONFIRMED
 - LOCAL TOURISM
 - LOCAL HERITAGE

PLAN IS PRELIMINARY AND SUBJECT TO CHANGE.

01	20/05/21		PRELIMINARY CVP	
NO	Date	By	REVISIONS	MANU CAD



TITLE
GTA WEST
HIGHWAY AND TRANSIT CORRIDOR
COMMUNITY VALUE PLAN
ALTERNATIVE S3-4M

Scale
1:8000
0 100 200 300 400
Drawing NO
SHEET L3 OF L9